



**REGIONAL SPECIALISED METEOROLOGICAL CENTRE-TROPICAL CYCLONES, NEW DELHI
TROPICAL WEATHER OUTLOOK**

DEMS-RSMC TROPICAL CYCLONES NEW DELHI DATED 22.08.2024

TROPICAL WEATHER OUTLOOK FOR NORTH INDIAN OCEAN (THE BAY OF BENGAL AND THE ARABIAN SEA) VALID FOR NEXT 168 HOURS ISSUED AT 0600 UTC OF 22.08.2024 BASED ON 0300 UTC OF 22.08.2024.

BAY OF BENGAL:

YESTERDAY'S LOW PRESSURE AREA OVER NORTH BANGLADESH & NEIGHBOURHOOD PERSISTED OVER THE SAME REGION AT 0300 UTC OF TODAY, THE 22ND AUGUST 2024. THE ASSOCIATED CYCLONIC CIRCULATION EXTENDS UPTO 9.4 KM ABOVE MEAN SEA LEVEL. IT IS LIKELY TO MOVE NEARLY WESTWARDS ACROSS WEST BENGAL DURING NEXT 48-HOURS.

A FRESH CYCLONIC CIRCULATION IS LIKELY TO FORM OVER NORTH BAY OF BENGAL & NEIGHBOURHOOD AROUND 24TH AUGUST.

SCATTERED LOW AND MEDIUM CLOUDS WITH EMBEDDED INTENSE TO VERY INTENSE CONVECTION LAY OVER BAY OF BENGAL & NORTH ANDAMAN SEA AND MODERATE TO INTENSE CONVECTION LAY OVER ARAKAN COAST, SOUTH ANDAMAN SEA GULF OF MARTABAN & TENASSERIM COAST.

***PROBABILITY OF CYCLOGENESIS (FORMATION OF DEPRESSION) DURING NEXT 168 HRS:**

| 24 HOURS | 24-48 HOURS | 48-72 HOURS | 72-96 HOURS | 96-120 HOURS | 120-144 HOURS | 144-168 HOURS |
|----------|-------------|-------------|-------------|--------------|---------------|---------------|
| NIL | NIL | NIL | NIL | NIL | NIL | NIL |

***NOTE: EVERY 24HR FORECAST IS VALID UPTO 0300 UTC (0830 IST) OF NEXT DAY**

ARABIAN SEA:

YESTERDAY'S CYCLONIC CIRCULATION OVER EASTCENTRAL ARABIAN SEA LAY AS A LOW PRESSURE AREA OVER EASTCENTRAL ARABIAN SEA OFF KARNATAKA-GOIA COASTS WITH THE ASSOCIATED CYCLONIC CIRCULATION EXTENDING UPTO 5.8 KM ABOVE MEAN SEA LEVEL, IT IS LIKELY TO MOVE GRADUALLY NORTHWARDS DURING NEXT 24 HOURS.

YESTERDAY'S CYCLONIC CIRCULATION OVER NORTHEAST ARABIAN SEA ADJOINING GUJARAT BETWEEN 4.5 & 5.8 KM ABOVE MEAN SEA LEVEL BECAME LESS MARKED AT 0300 UTC OF TODAY, THE 22ND AUGUST 2024.

SCATTERED TO BROKEN LOW AND MEDIUM CLOUDS WITH EMBEDDED INTENSE TO VERY INTENSE CONVECTION LAY OVER CENTRAL ARSEA. SCATTERED LOW AND MEDIUM CLOUDS WITH EMBEDDED MODERATE TO INTENSE CONVECTION LAY OVER

SOUTH ARABIAN SEA MALDIVES & COMORIN AREA AND ISOLATED WEAK TO MODERATE CONVECTION LAY OVER NORTHEAST ARABIAN SEA GULF OF KUTCH GULF OF CAMBAY LAKSHADWEEP ISLANDS AREA.

***PROBABILITY OF CYCLOGENESIS (FORMATION OF DEPRESSION) DURING NEXT 168 HRS:**

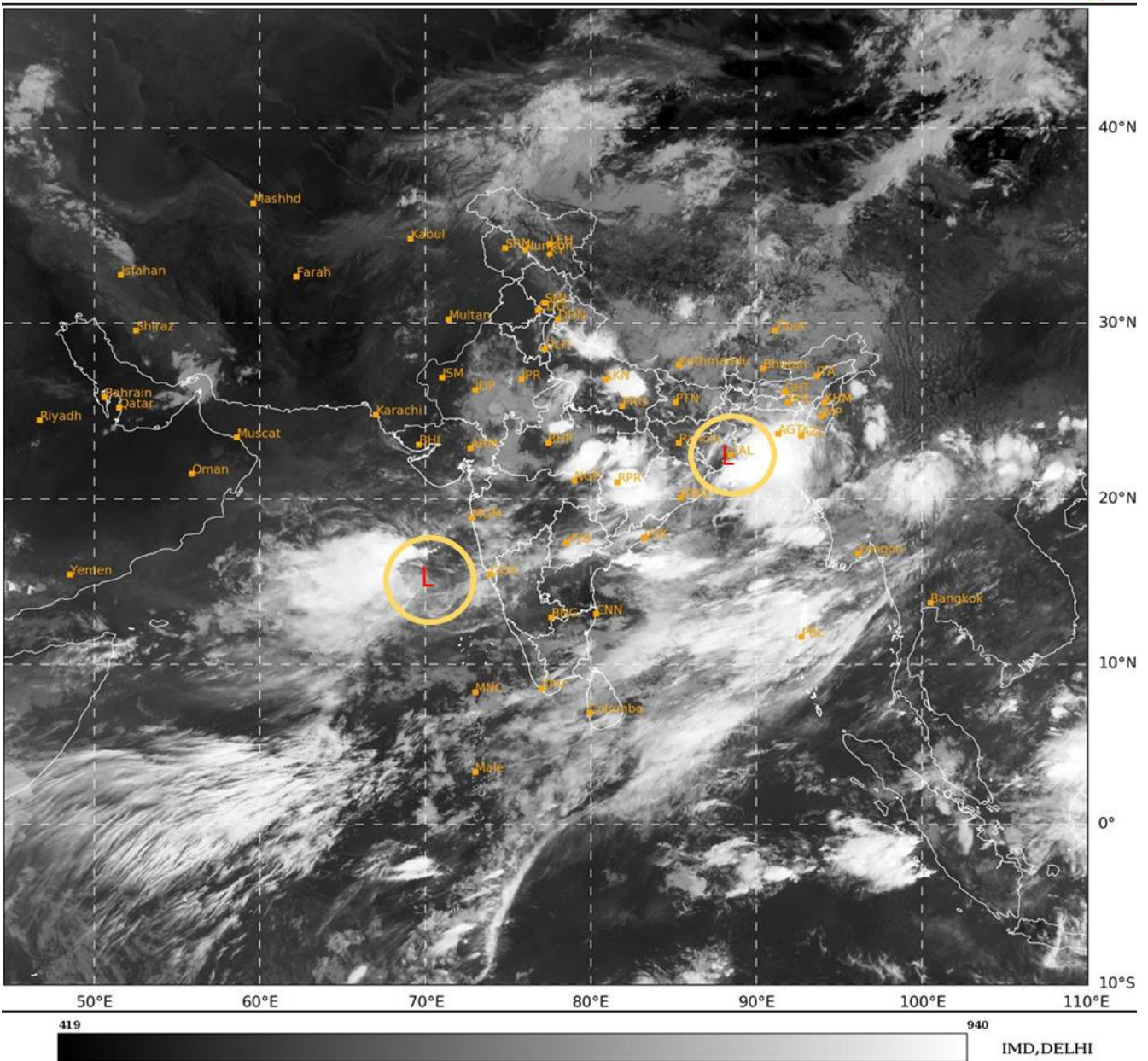
| 24 HOURS | 24-48 HOURS | 48-72 HOURS | 72-96 HOURS | 96-120 HOURS | 120-144 HOURS | 144-168 HOURS |
|----------|-------------|-------------|-------------|--------------|---------------|---------------|
| NIL | NIL | NIL | NIL | NIL | NIL | NIL |

***NOTE: EVERY 24HR FORECAST IS VALID UPTO 0300 UTC (0830 IST) OF NEXT DAY**

REMARKS: NIL

SAT : INSAT-3DR IMG
 IMG_TIR1 10.8 um
 LIC Mercator

22-08-2024/(0315 to 0342) GMT
 22-08-2024/(0845 to 0912) IST



L: LOW PRESSURE AREA

Cloud distribution: (a) Isolated: <25%, Scattered:25-50%, Broken: 51-75%, Solid:>75%, Convection Intensity: (a) Weak: Cloud Top Temperature (CTT) >-25°C, (b) Moderate: CTT: - 25°C to -40°C, (c) Intense: CTT: - 41°C to -70°C and (d) Very Intense: : Less than -70°C
PROBABILITY OF CYCLOGENESIS (FORMATION OF DEPRESSION):NIL: 0%, LOW: 1-33%, , MODERATE: 34-66% AND HIGH: 67-100%
 This is a guidance Bulletin for WMO/ESCAP Panel Member countries. Visit respective National websites for Country specific Bulletins